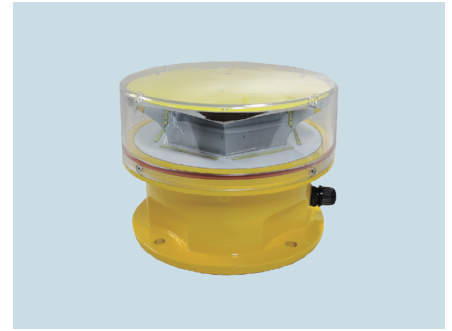


AWL-M Series Medium Intensity Aircraft Warning Light

LED 20W	110-240V AC
2000cd	DC 48/36/24/12V
Type 4X,IP66	-40 C ~ +55 C



Applications

- Telecommunication towers, chimneys, smoke stacks, high-rise buildings, large bridges, port machinery, construction machinery, wind turbines and other industries.
- The red lights on top of tall buildings are aircraft warning light, the reason why red light is because aircraft warning light normal produce red light to warn and remind the aircrafts the location of the tall buildings and how to control the distance to the tall buildings, SUREALL AWL-M series medium intensity aircraft warning light can provide red color light for warning function.
- All high-rise buildings can bring potential dangers for aircrafts, so those buildings need to be lighted as an obstruction to pilots, medium intensity obstruction light can be used for typical applications as below:
 - > Coal chimney, oil refineries, power plants, hyperbolic cooling towers
 - > Water towers, storage tanks, similar structures
 - > Power lines, transmission lines, telecommunication towers
 - > Offshore oil & gas platforms, lighthouses
 - > Meteorological towers, wind measurement towers

Features

Valued light intensity can reach up to 2000cd, medium-intensity aircraft warning light AWL-M series have the widest application range for tall structures as warning lights for air planes. Middle intensity led is suitable for middle height building such as tower cranes, wind turbine generator set, high mast pole, iron tower for electrical power, communication and microwave. This aviation light are worked as aviation light, obstruction lights, aviation light for towers, led obstruction light, tower obstruction light, faa light, airport obstructer lights.

> Medium intensity light up to 2000cd for top of medium height obstruction

Technical Datasheet

Rated Voltage	110-240V AC 50/60Hz
	DC 48/36/24/12V
	20W
	2000cd
	360
	3
	40-60 flashes per minute
	Wet Locations, Type 4X, IP66
	-40°C ~ +55°C / -40° F ~ +131° F
	3/4 inch pipe thread as standard, 1inch as option
	190 × 190 × Ø 12
	229 × 229 × 168mm, 3Kg

Catalogue Numbering System

AWL-M-	N	R
	Alarm Type	Lamp Color
	N-No Alarm	R-Red
	A-Alarm	W-White
20	V1	
Flash Rate	Voltage	
20-20FPM	V1:110-240V AC	
30-30FPM	V2:DC 48V	
40-40FPM	V3:DC 36V	
60-60FPM	V4:DC 24V	
	V5:DC 12V	