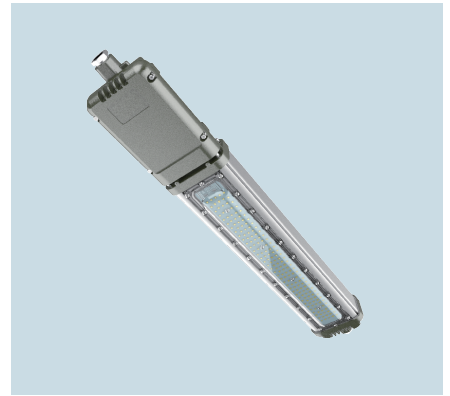


IFL-B Industrial LED Linear Lighting

| | |
|--------------------|--------------------------|
| LED 40-120W | 5,600-16,800lm |
| 140lm/W Efficiency | 100-277V / 200-480V |
| Type 4X,IP66 | -40 °C ~ +55 °C |
| Heavy Industry | Wet & Corrosive Location |



| Model | Lumens | Wattage | Lumens per Watt | Equivalent HID Luminaire |
|------------|--------|---------|-----------------|--------------------------|
| IFL-B-40W | 5600 | 40W | 140 | 100-150W |
| IFL-B-60W | 8400 | 60W | 140 | 175-250W |
| IFL-B-80W | 11200 | 80W | 140 | 320-400W |
| IFL-B-120W | 16800 | 120W | 140 | 400-600W |



Applications

- Usage by application: Interior and exterior deck, deck rail, warehouse, workshop, garage, crane machines room, pump rooms, electrical rooms, waster water treatment plants, paint spray facilities, chemical manufacturing plant, metal processing plant.
- Usage by physical places: Physical places include wall, ceiling of rooms, doorways, stairways, access ways, exit, around the machines, wash down areas, overhead, work-bench, stanchion pole mount.
- Industrial led tube light are applied for areas where corrosive and extreme elements are exposed below:
 - > Industrial application: paint spray booths, non-hazardous processing center, safety workshop, bulk handling area, electrical distribution room.
 - > Warehouse application: cargos storage, machines warehouse.

Features

Industrial led linear lighting IFL-B series is structured with corrosive resistant aluminum alloy housing with powder coated surface for mining and metal processing, wastewater treatment, power generation, industrial manufacturing application. Available for 2ft and 4ft led panel producing 2800 and 5600 lumens, this led tube light is built up to be used to replace fluorescent light with led and worked as led warehouse lighting, industrial warehouse lighting, industrial led shop lights, instrument panel lights, paint booth lights, linear led high bays especially for hose down and corrosive environment.

- > Die cast aluminum alloy housing with separate chamber for led driver
- > 4 feet tube length for high watts 120W to work as linear high bay light for large area

Standard Materials

Housing: Die cast aluminum with anti-corrosion powder coat, green

Lens: Heat-resistant and impact-resistant tempered glass

Gaskets: Silicone



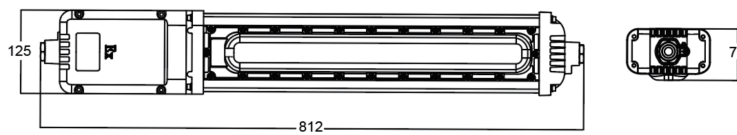
Technical Datasheet

| | | | | |
|---------------------|---|------|-------|-------|
| Rated Voltage | 100–277V AC 50/60Hz 200–480V AC 50/60Hz | | | |
| Wattage (W) | 40W | 60W | 80W | 120W |
| Lumens (LM) | 5600 | 8400 | 11200 | 16800 |
| Color Temperature | 5000K/4000K/2700K | | | |
| IP Grade | Wet Locations, Type 4X, IP66 | | | |
| Ambient Temperature | –40°C ~ +55°C / –40° F ~ +131° F | | | |
| Cable Entry | NPT 3/4" or M25X1.5 | | | |
| Terminals | Terminal blocks ≤ 2.5mm ² , cable diameter 10–14mm | | | |
| Mounting Type | Stanchion / Ceiling / Bracket | | | |
| Beam Angle | 120° / 90° / 60° / 40° | | | |

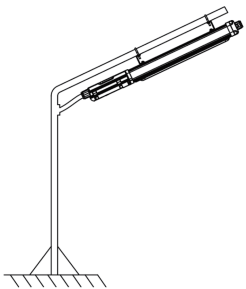
Catalogue Numbering System

| IFL-B- | 20 | N | C | W | 1 | V1 | EM |
|---------------|-------------|-------------------|-------------------|------------|----------------|-----------|-----------|
| Lamp | Cable Entry | Mounting Type | Color Temperature | Beam Angle | Voltage | Emergency | |
| 40–40W | N–NPT 3/4" | S–Stanchion | C–Cool(5000K) | 1–120° | V1:100–277V AC | E1–120min | |
| 60–60W | M–M25x1.5 | C1–Ceiling Type 1 | N–Nature(4000K) | 2–90° | V2:200–480V AC | E2–180min | |
| 80–80W | | C2–Ceiling Type 2 | W–Warm(3000K) | 3–60° | | | |
| 120–120W | | B–Bracket | | 4–40° | | | |

Mounting Options & Dimensions (mm/inch)



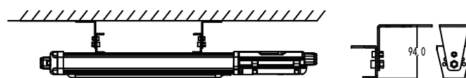
S: Stanchion Type



C1: Ceiling Type 1



C2: Ceiling Type 2



B: Bracket Type

