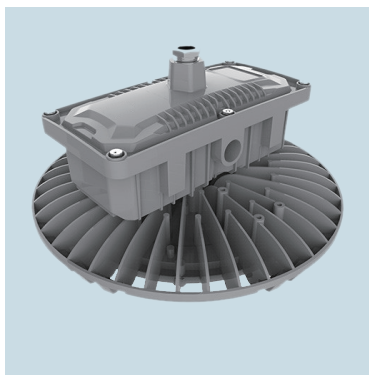


## IHB-H Series Industrial High Bay Led Lighting

LED 10-240W	1,400-33,600lm
140lm/W Efficiency	100-277V / 347-480V
Type 4X,IP66	-40°C ~ +55°C
Heavy Industry	Wet & Corrosive Location



Model	Lumens	Wattage	Lumens per Watt	Equivalent HID Luminaire
IHB-H-10W	1400	10W	140	70W
IHB-H-30W	4200	30W	140	70-100W
IHB-H-50W	7000	50W	140	100-150W
IHB-H-60W	8400	60W	140	150-175W
IHB-H-80W	11200	80W	140	175-250W
IHB-H-100W	14000	100W	140	320-400W
IHB-H-120W	16800	120W	140	400W
IHB-H-150W	21000	150W	140	400-600W
IHB-H-200W	28000	200W	140	600-750W
IHB-H-240W	33600	240W	140	750-1000W



### Applications

- Usage by application: Garage, basement, parking lot, warehouse, loading dock, gym, indoor basket court, shop, tunnel, ship, factory, indoor tennis court, workstation, in door sport court, carport, workshop, coastal area, power plant, seaport, paint booth, substation, prison, cold storage area, marine area.
- Usage by physical places: Industrial high bay lighting can be used in high or middle ceiling areas, high and low temperature areas, furious and rainy space, steel structure areas, wall areas, stanchion areas, guardrail areas and other areas with or without support frame or plates, where corrosive, wet, dusty, hot and cold condition exists.
- For areas with mounting heights of 13-40ft (4-12m).

### Features

As a classic heavy industrial high bay led lighting or jelly jar light, IHB-H series industrial high bay led lights are designed with a bay shape housing and led lamp source providing long life and high lumen performance in area lighting where corrosive, wet, dusty, hot and cold condition exists. Features with varied flexible mounting kit, it can be used as led warehouse lighting, industrial warehouse lighting, high bay led shop lights, industrial shop lights, industrial led shop lights and led factory light.

- > Separate chamber for led driver for convenient connection and maintenance
- > Circular fins heat sink structure to remove heat to reduce the temperature rise
- > Vertical jelly jar displacement structure to emit over-all well-distributed light
- > Matrix led lamp structure to improve the lighting waste from different directions

## Standard Materials

**Housing:** Die cast aluminum with anti-corrosion powder coat, grey

**Lens:** Heat-resistant and impact-resistant tempered glass

**Gaskets:** Silicone



## Technical Datasheet

Rated Voltage	100–277V AC 50/60Hz 347–480V AC 50/60Hz									
Wattage (W)	10W	30W	50W	60W	80W	100W	120W	150W	200W	240W
Lumens (LM)	1200	4200	7000	8400	11200	14000	16800	21000	28000	33600
Color Temperature	5000K/4000K/3000K									
IP Grade	Wet Locations, Type 4X, IP66									
Ambient Temperature	–40°C~ +55°C / –40° F ~ +131° F									
Cable Entry	NPT 3/4" or M25X1.5 (adaptor for M20x1.5, NPT 1" , NPT1 1/2" )									
Terminals	Terminal blocks ≤ 2.5mm <sup>2</sup> , cable diameter 10–14mm									
Mounting Type	Stanchion Flange / Stanchion Fence / Pendant / Ceiling / Wall Pole / Wall Bracket / Trunnion									
Beam Angle	120° / 150° / 90° / 60°									

## Catalogue Numbering System

**IHB-H-**

**30**

**N**

**C**

**W**

**1**

**V1**

Lamp

Cable Entry

Mounting Type

Color Temperature

Beam Angle

Voltage

10–10W

30–30W

50–50W

60–60W

80–80W

100–100W

120–120W

150–150W

200–200W

240–240W

N–NPT 3/4"

M–M25x1.5

S1–Stanchion Flange

S2–Stanchion Fence

P–Pendant

C–Ceiling

W1–Wall Pole

W2–Wall Bracket

T–Trunnion

C–Cool(5000K)

N–Nature(4000K)

W–Warm(3000K)

1–120°

2–150°

3–90°

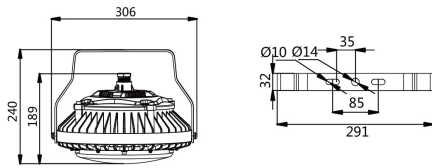
4–60°

V1:100–277V AC

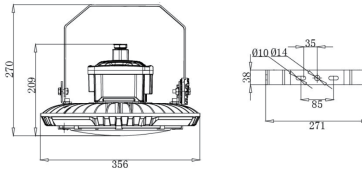
V2:347–480V AC

# Mounting Options & Dimensions (mm/inch)

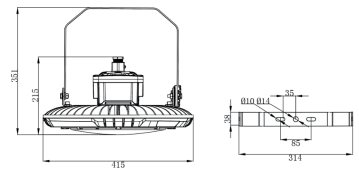
IHB-H 10-130W



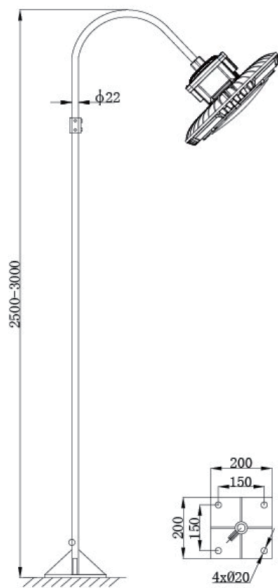
IHB-H 100-150W



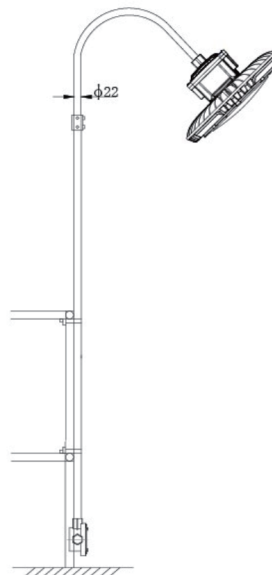
IHB-H 160-240W



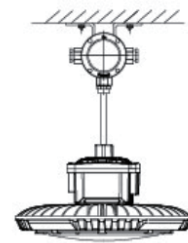
S1: Stanchion Flange Type



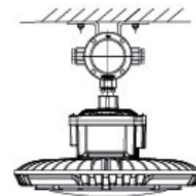
S2: Stanchion Fence Type



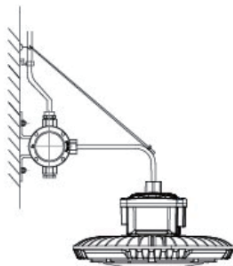
P: Pendant Type



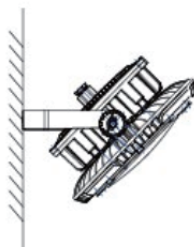
C: Ceiling Type



W1: Wall Pole Type



W2: Wall Bracket Type



T: Trunnion Type

