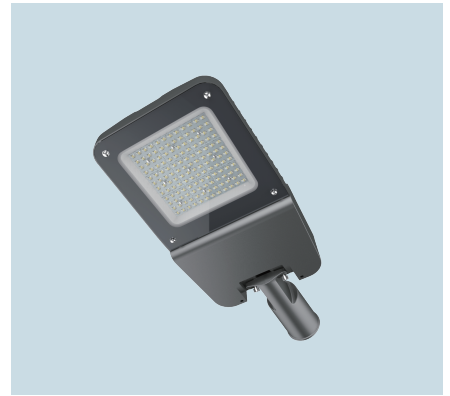


ISL-E Series Road Street Lights

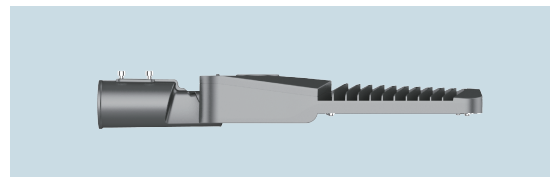
LED 60-180W	84,000-25,200lm
140lm/W Efficiency	100-277V / 200-480V
Type 4X,IP66	-40 °C ~ +55 °C
Heavy Industry	Wet & Corrosive Location



Model	Lumens	Wattage	Lumens per Watt	Equivalent HID Luminaire
ISL-E-60W	8400	60W	140	250W-320W
ISL-E-80W	11200	80W	140	320-400W
ISL-E-100W	14000	100W	140	400W
ISL-E-120W	16800	120W	140	400-600W
ISL-E-150W	21000	150W	140	600-750W
ISL-E-180W	25200	180W	140	750-1000W

Applications

- Usage by application: internal road of outdoor loading dock, outdoor warehouse, factory, workshop, seaport, street, road, roadway, driveway, walkway, freeway, highway, city, country.
- Usage by physical: installed on the ground-based pole, mast, stanchion, steel based bracket or platform where corrosive, wet, sunny condition exists.
- Offer proper illumination at both sides of street to guide cars, pedestrians to be visible for each other to improve the safety to protect people's life. Then, a bright street is a proven way of reducing crime such as robberies to set up a safe society. It can not only be used in general street but also inner street, road of industrial zone and factory.
 - > City road, urban road and rural road, secondary road, trunk road
 - > Square, parking lot, playground
 - > Farms, barns and courtyards
 - > Island, coastal area
 - > Square, parking lot, playground of industrial zone



Features

Road street lights ISL-E series are widely used for street, bridge, road, roadway, driveway, walkway, bridge, freeway, highway city as street lighting, led road light, roadway light, public lighting, driveway light, led walkway lights, bridge of light, freeway lights, highway street lights, led city street lights and country lighting. It can be also called led shoebox light, cobra head light, whose led lamp save at least 70% energy when compared with HPS street lights.

- > Back type heat removal structure to increase the area of air flow to cool down
- > Convenient lock-up device for the cover to fast maintenance and replacement
- > Inner hex screw to lighting pole for tough joint and connection
- > Adjustable angle for lighting within 30° to find the proper lighting distribution

Standard Materials

Housing: Die cast aluminum with anti-corrosion powder coat, grey

Lens: Heat-resistant and impact-resistant tempered glass







Gaskets: Silicone



Technical Datasheet

Rated Voltage	100–277V AC 50/60Hz 200–480V AC 50/60Hz					
Wattage (W)	60W	80W	100W	120W	150W	180W
Lumens (LM)	8400	11200	14000	16800	21000	25200
Color Temperature	5000K/4000K/3000K					
IP Grade	Wet Locations, Type 4X, IP66					
Ambient Temperature	–40°C~ +55°C / –40° F ~ +131° F					
Cable Entry	NPT 3/4" or M25X1.5 (adaptor for M20x1.5, NPT 1" , NPT1 1/2")					
Terminals	Terminal blocks ≤ 2.5mm ² , cable diameter 10–14mm					
Mounting Type	Stanchion					
Beam Angle	120° / 60° / 45° / 30°					

Catalogue Numbering System

ISL-E-	80	N	C	W	1	V1
						
	Lamp	Cable Entry	Mounting Type	Color Temperature	Beam Angle	Voltage
	60–60W 120–120W	N–NPT 3/4"	S–Stanchion	C–Cool(5000K)	1–120°	V1:100–277V AC
	80–80W 150–150W	M–M25x1.5		N–Nature(4000K)	2–60°	V2:200–480V AC
	100–100W 180–180W			W–Warm(3000K)	3–45°	
					4–30°	

Mounting Options & Dimensions (mm/inch)

