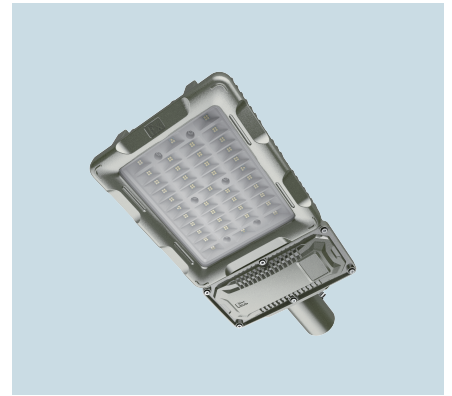


ISL Series Industrial Street Lights

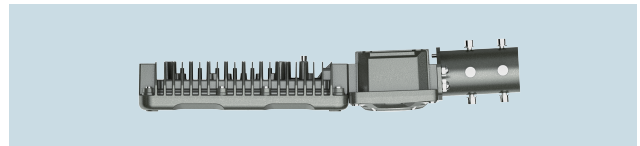
LED 80-200W	11,200-28,000lm
140lm/W Efficiency	100-277V / 200-480V
Type 4X, IP66	-40 °C ~ +55 °C
Heavy Industry	Wet & Corrosive Location



Model	Lumens	Wattage	Lumens per Watt	Equivalent HID Luminaire
ISL-80W	11200	80W	140	320-400W
ISL-100W	14000	100W	140	400W
ISL-120W	16800	120W	140	400-600W
ISL-150W	21000	150W	140	600-750W
ISL-200W	28000	200W	140	750-1000W

Applications

- Usage by application: internal road of outdoor loading dock, outdoor warehouse, factory, workshop, seaport, street, road, roadway, driveway, walkway, freeway, highway, city, country.
- Usage by physical: installed on the ground-based pole, mast, stanchion, steel based bracket or platform where corrosive, wet, sunny condition exists.
- Offer proper illumination at both sides of street to guide cars, pedestrians to be visible for each other to improve the safety to protect people's life. Then, a bright street is a proven way of reducing crime such as robberies to set up a safe society. It can not only be used in general street but also inner street, road of industrial zone and factory.
 - > Industrial zone, science and technology park
 - > Island, coastal area
 - > Road for large machines, large canes, large trucks
 - > Science and technology park



Features

Used in internal street, road, access and exit in heavy industry plant especially in wet, corrosive condition, street lights ISL series is made of high impact resistance aluminum alloy housing with high lumen led lamp. It also can be used in outdoor warehouse, loading dock, seaport as street lighting where high temperature, corrosion, moisture, dust exist frequently. It also can be used as cobra head street lights, led streetlights, sodium light to replace HPS street light in general usage application.

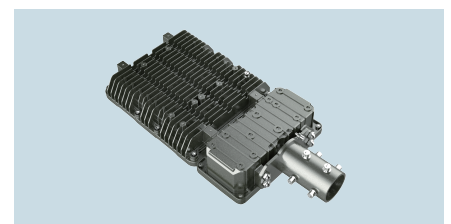
- > Water, wind, impact and corrosion resistance aluminum alloy housing with powder coated surface
- > Stripe heat dissipation structure control the range of temperature changes
- > Rapid connection head to lighting pole through stainless steel bolts
- > Separate chamber for led driver to reduce installation and maintenance cost

Standard Materials

Housing: Die cast aluminum with anti-corrosion powder coat, green

Lens: Heat-resistant and impact-resistant tempered glass

Gaskets: Silicone



Technical Datasheet

Rated Voltage	100–277V AC 50/60Hz 200–480V AC 50/60Hz				
Wattage (W)	80W	100W	120W	150W	200W
Lumens (LM)	11200	14000	16800	21000	28000
Color Temperature	5000K/4000K/3000K				
IP Grade	Wet Locations, Type 4X, IP66				
Ambient Temperature	–40°C~ +55°C / –40° F ~ +131° F				
Cable Entry	NPT 3/4" or M25X1.5 (adaptor for M20x1.5, NPT 1" , NPT1 1/2")				
Terminals	Terminal blocks ≤ 2.5mm ² , cable diameter 10–14mm				
Mounting Type	Stanchion				
Beam Angle	120° / 60° / 45° / 30°				

Catalogue Numbering System

ISL-	80	N	C	W	1	V1
	Lamp	Cable Entry	Mounting Type	Color Temperature	Beam Angle	Voltage
	80–80W	N–NPT 3/4"	S1–Stanchion Type 1	C–Cool(5000K)	1–120°	V1:100–277V AC
	100–100W	M–M25x1.5	S2–Stanchion Type 2	N–Nature(4000K)	2–60°	V2:200–480V AC
	120–120W		S3–Stanchion Type 3	W–Warm(3000K)	3–45°	
	150–150W				4–30°	
	200–200W					

Mounting Options & Dimensions (mm/inch)

