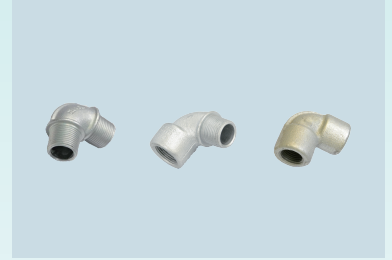


SE Series Elbows

SE series elbows connect hubs with 90°/45° direction change
For use in Hazardous Locations



Application

> SE series elbows are installed to connect conduit to conduit, a conduit fitting, junction box or device enclosure in rigid conduit systems

SE series elbows are designed to change direction in threaded rigid conduit by 90° or 45° angle

> Classified and hazardous locations where flammable vapors, gases, ignitable dusts, fibers or flying are present

Features

> SE series elbows have taped thread in both two ends

M/F: One end is male thread, the other end is female thread

M/M: Both two ends are male thread

F/F: Both two ends are female thread

> Compact threaded design which permits detachable assembly for both two ends, ease the connection and disconnection for two ends conduits

> Super corrosion resistance, high strength impact resistance

> Suitable thread for both two ends:

- SE series elbows

- Metric thread (M16x1.5-M115x1.5) and NPT thread (NPT3/8" – NPT4")

> Ingress protection: standard IP66, optional IP68 with special sealing

> Operating Temperature: -40 °C ~ +100 °C

Standard Material

> Carbon Steel

> Nickel Plated Brass

> 304 Stainless Steel

> 316 Stainless Steel

Kit Accessories Options

K0: no accessories

K1: O-Ring



Certifications

EN Standard-ATEX

II 2 G Ex d IIC Gb

Zone 1, Zone 2 Group IIA, IIB and IIC

II 2 D Ex tb IIIC Db

Zone 21, Zone 22 Group IIIA, IIIB and IIIC

IEC Standard-IECEX

Ex d IIC Gb

Zone 1, Zone 2 Group IIA, IIB and IIC

Ex tb IIIC Db

Zone 21, Zone 22 Group IIIA, IIIB and IIIC

NEC Standard-UL

Class I, Division 1, Group A B C D

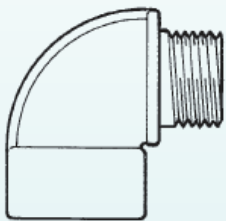
Class II, Division 1, Group E F G

Type 4X

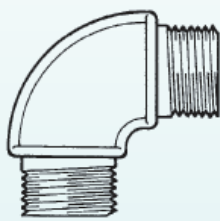
Ordering Information

Cat.#	Hub size	Cat.#	Hub size	Cat.#	Hub size
Male Thread/ Female Thread		Male Thread/ Male Thread		Female Thread / Female Thread	
SE-MF01A	M16x1.5/ M16x1.5	SE-MM01A	M16x1.5/ M16x1.5	SE-FF01A	M16x1.5/ M16x1.5
SE-MF01B	NPT3/8" /NPT3/8"	SE-MM01B	NPT3/8" /NPT3/8"	SE-FF01B	NPT3/8" /NPT3/8"
SE-MF02A	M20x1.5/ M20x1.5	SE-MM02A	M20x1.5/ M20x1.5	SE-FF02A	M20x1.5/ M20x1.5
SE-MF02B	NPT1/2" /NPT1/2"	SE-MM02B	NPT1/2" /NPT1/2"	SE-FF02B	NPT1/2" /NPT1/2"
SE-MF03A	M25x1.5/ M25x1.5	SE-MM03A	M25x1.5/ M25x1.5	SE-FF03A	M25x1.5/ M25x1.5
SE-MF03B	NPT3/4" /NPT3/4"	SE-MM03B	NPT3/4" /NPT3/4"	SE-FF03B	NPT3/4" /NPT3/4"
SE-MF04A	M32x1.5/ M32x1.5	SE-MM04A	M32x1.5/ M32x1.5	SE-FF04A	M32x1.5/ M32x1.5
SE-MF04B	NPT1" /NPT1"	SE-MM04B	NPT1" /NPT1"	SE-FF04B	NPT1" /NPT1"
SE-MF05A	M40x1.5/ M40x1.5	SE-MM05A	M40x1.5/ M40x1.5	SE-FF05A	M40x1.5/ M40x1.5
SE-MF05B	NPT1 1/4" /NPT1 1/4"	SE-MM05B	NPT1 1/4" /NPT1 1/4"	SE-FF05B	NPT1 1/4" /NPT1 1/4"
SE-MF06A	M50x1.5/ M50x1.5	SE-MM06A	M50x1.5/ M50x1.5	SE-FF06A	M50x1.5/ M50x1.5
SE-MF06B	NPT1 1/2" /NPT1 1/2"	SE-MM06B	NPT1 1/2" /NPT1 1/2"	SE-FF06B	NPT1 1/2" /NPT1 1/2"
SE-MF07A	M63x1.5/ M63x1.5	SE-MM07A	M63x1.5/ M63x1.5	SE-FF07A	M63x1.5/ M63x1.5
SE-MF07B	NPT2" /NPT2"	SE-MM07B	NPT2" /NPT2"	SE-FF07B	NPT2" /NPT2"
SE-MF08A	M75x1.5/ M75x1.5	SE-MM08A	M75x1.5/ M75x1.5	SE-FF08A	M75x1.5/ M75x1.5
SE-MF08B	NPT2 1/2" /NPT2 1/2"	SE-MM08B	NPT2 1/2" /NPT2 1/2"	SE-FF08B	NPT2 1/2" /NPT2 1/2"
SE-MF09A	M90x1.5/ M90x1.5	SE-MM09A	M90x1.5/ M90x1.5	SE-FF09A	M90x1.5/ M90x1.5
SE-MF09B	NPT3" /NPT3"	SE-MM09B	NPT3" /NPT3"	SE-FF09B	NPT3" /NPT3"
SE-MF10A	M115x1.5/ M115x1.5	SE-MM10A	M115x1.5/ M115x1.5	SE-FF10A	M115x1.5/ M115x1.5
SE-MF10B	NPT4" /NPT4"	SE-MM10B	NPT4" /NPT4"	SE-FF10B	NPT4" /NPT4"

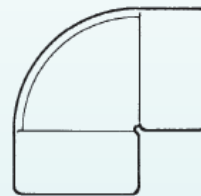
* Standard angle is 90°, optional 45°.



90°Male & Female Thread



90°Male & Male Thread



90°Female & Female Thread



45°Female & Female Thread

Catalogue Numbering System

SE-

MM

Thread Type of Conduit Hub

MM: Male/Male thread

MF: Male/Female thread

FF: Female /Female thread

FF45: 45° Female/Female Thread

01A

Thread Type

M16x1.5 – M115x1.5

NPT3/8" – NPT4"

KO

Kit Accessories

K0: no accessories

K1: O-Ring

