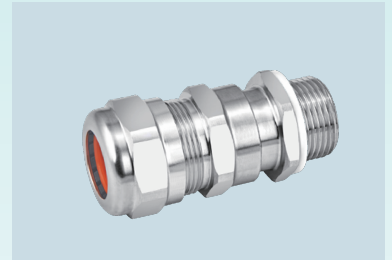


SGA Series Cable Gland For use in Hazardous Locations

For all types of armored cable
Metallic material, dual seal



Features

- > Wide cable outer connection diameters
- > Controlled pulling resistance
- > Low torque required for tightening
- > Flameproof sealing on the outer sheath of non-armored cable
- > Dual silicon modified rubber internal sealing, optional: single sealing
- > Superior corrosion resistance, high strength impact resistance, EMC application
- > Metric thread (M16x1.5-M63x1.5) and NPT thread (NPT3/8" - NPT2")
- > Ingress protection: standard IP66, optional IP68 with special sealing
- > Operating Temperature: -40 °C ~ +130 °C

Standard Material

- > Nickel Plated Brass
- > 304 Stainless Steel
- > 316 Stainless Steel

Kit Accessories Options

K0: no accessories

K1: ■ Locknut ■ Seal washer

K2: ■ Locknut ■ Seal washer ■ Earth lug

K3: ■ Locknut ■ Seal washer ■ Earth lug ■ Serrated washer

K4: ■ Locknut ■ Seal washer ■ Earth lug ■ Serrated washer ■ Sheath



Locknut



Seal washer



Earth lug



Serrated washer



Sheath

Certifications

EN Standard-ATEX

Ex II 2 G Ex db IIC Gb

Zone 1, Zone 2 Group IIA, IIB and IIC

Ex II 2 D Ex tb IIIC Db

Zone 21, Zone 22 Group IIIA, IIIB and IIIC

IEC Standard-IECEX

Ex db IIC Gb

Zone 1, Zone 2 Group IIA, IIB and IIC

Ex tb IIIC Db

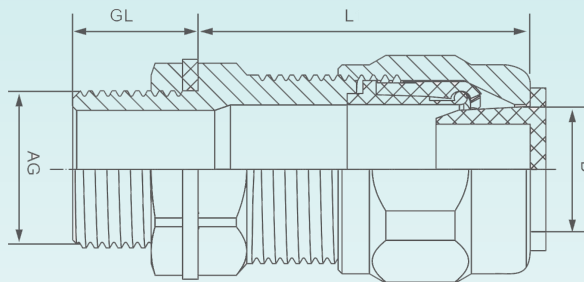
Zone 21, Zone 22 Group IIIA, IIIB and IIIC

NEC Standard-UL

Class I, Division 1, Group A B C D Class

II, Division 1, Group E F G

Type 4X



Ordering Information

Metric Thread		NPT Thread		Cable outer diameter(mm)	Thread length(mm)	Protrusion length(mm)	Across flats(mm)
Size	Cat.#	Size	Cat.#	–	GL	H	A
M16x1.5A	SGA01M	NPT3/8"	SGA01N	4–8 / 5.5–12	16	63	29
M16x1.5B	SGA02M	NPT3/8"	SGA02M	6.5–11 / 9.5–16	16	63	29
M20x1.5A	SGA03M	NPT1/2"	SGA03M	4–8 / 5.5–12	16	63	29
M20x1.5B	SGA04M	NPT1/2"	SGA04N	6.5–10 / 9.5–16	16	63	29
M20x1.5C	SGA05M	NPT1/2"	SGA05N	10–15 / 12–21	16	64	37
M25x1.5B	SGA06M	NPT3/4"	SGA06N	10–15 / 12–21	16	64	37
M25x1.5C	SGA07M	NPT3/4"	SGA07N	12–20 / 17–26	16	71	44
M32x1.5B	SGA08M	NPT1"	SGA08N	12–20 / 17–26	18	71	44
M32x1.5C	SGA09M	NPT1"	SGA09N	19–26 / 22–23	18	77	55
M40x1.5B	SGA10M	NPT1 1/4"	SGA10N	19–26 / 22–23	18	77	55
M40x1.5C	SGA11M	NPT1 1/4"	SGA11N	25–31 / 28–41	18	84	67
M50x1.5B	SGA12M	NPT1 1/2"	SGA12N	25–31 / 28–41	20	84	67
M50x1.5C	SGA13M	NPT1 1/2"	SGA13N	31–37 / 36–53	20	109	73
M63x1.5B	SGA14M	NPT2"	SGA14N	31–37 / 36–53	21	109	73
M63x1.5C	SGA15M	NPT2"	SGA15N	42–49 / 46–64	21	120	89
M75x1.5B	SGA16M	NPT2 1/2"	SGA16N	42–49 / 46–64	22	120	89
M75x1.5C	SGA17M	NPT2 1/2"	SGA17N	54–64 / 57–78	22	130	105
M80x1.5	SGA18M	NPT 3"	SGA18N	54–64 / 57–78	22	130	105

Catalogue Numbering System

SGA

01

M

K0

Thread Code

Thread Type

Kit Accessories

M16x1.5 – M80x1.5	M: Metric thread	K0: no accessories
NPT3/8 " – NPT3"	N: NPT thread	K1: Locknut & Seal washer
		K2: Locknut & Seal washer & Earth lug
		K3: Locknut & Seal washer & Earth lug & Sheath