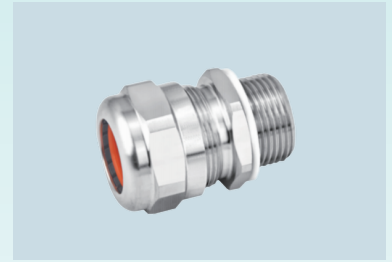


SGM Series Cable Gland For use in Hazardous Locations

For all types of non-armored cable
Metallic material



Features

- > Wide cable outer connection diameters
- > Secure against self-losing
- > Silicon modified rubber internal sealing
- > Low torque required for tightening
- > Corrosion resistance, impact resistance, EMC application
- > Metric thread (M16x1.5-M63x1.5) and NPT thread (NPT3/8" - NPT2")
- > Ingress protection: standard IP66, optional IP68 with special sealing
- > Operating Temperature: -40 °C ~ +100 °C

Standard Material

- > Nickel Plated Brass
- > 304 Stainless Steel
- > 316 Stainless Steel

Kit Accessories Options

K0: no accessories

K1: ■ Locknut ■ Seal washer

K2: ■ Locknut ■ Seal washer ■ Earth lug

K3: ■ Locknut ■ Seal washer ■ Earth lug ■ Sheath



Locknut



Seal washer



Earth lug



Sheath

Certifications

EN Standard-ATEX

⚠ II 2 G Ex eb IIC Gb

Zone 1, Zone 2 Group IIA, IIB and IIC

⚠ II 2 D Ex tb IIIC Db

Zone 21, Zone 22 Group IIIA, IIIB and IIIC

IEC Standard-IECEx

Ex eb IIC Gb

Zone 1, Zone 2 Group IIA, IIB and IIC

Ex tb IIIC Db

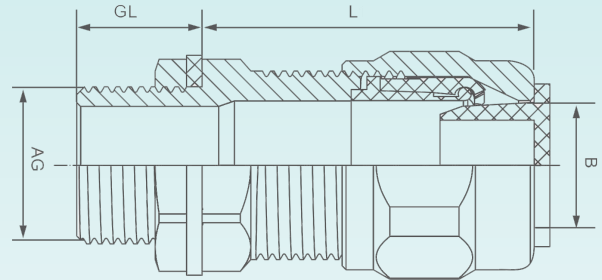
Zone 21, Zone 22 Group IIIA, IIIB and IIIC

NEC Standard-UL

Class I, Division 2, Group A B C D

Class II, Division 1, Group E F G

Type 4X



Ordering Information

Metric Thread		NPT Thread		Cable outer diameter(mm)	Thread length(mm)	Protrusion length(mm)	Across flats(mm)
Size	Cat.#	Size	Cat.#	–	GL	H	A
M16x1.5	SGM01M	NPT3/8"	SGM01N	2–7	16	40	27
M16x1.5	SGM02M	NPT3/8"	SGM02M	4–8	16	40	27
M16x1.5	SGM03M	NPT3/8"	SGM03M	5.5–12	16	40	27
M20x1.5	SGM04M	NPT1/2"	SGM04N	5.5–12	16	40	27
M20x1.5	SGM05M	NPT1/2"	SGM05N	9.5–16	16	40	27
M20x1.5	SGM06M	NPT1/2"	SGM06N	12–20	16	40	29
M25x1.5	SGM07M	NPT3/4"	SGM07N	8–14	16	40	29
M25x1.5	SGM08M	NPT3/4"	SGM08N	12–20.5	16	40	37
M25x1.5	SGM 09M	NPT3/4"	SGM09N	17–26	16	40	44
M32x1.5	SGM 10M	NPT1"	SGM10N	12–20.5	18	42	37
M32x1.5	SGM11M	NPT1"	SGM11N	17–26	18	42	44
M32x1.5	SGM12M	NPT1"	SGM12N	22–33	18	42	55
M40x1.5	SGM13M	NPT1 1/4"	SGM13N	17–26	18	47	44
M40x1.5	SGM14M	NPT1 1/4"	SGM14N	22–33	18	47	55
M40x1.5	SGM15M	NPT1"	SGM15N	28–41	18	47	67
M50x1.5	SGM16M	NPT1 1/2"	SGM16N	28–41	20	50	67
M63x1.5	SGM17M	NPT 2"	SGM17N	36–52.5	21	63	73
M75x1.5	SGM18M	NPT 2 1/2"	SGM18N	46–64	22	75	89

Catalogue Numbering System

SGM

01

Thread Code

M16x1.5 – M63x1.5
NPT3/8 " – NPT2 1/2"

M

Thread Type

M: Metric thread
N: NPT thread

KO

Kit Accessories

K0: no accessories
K1: Locknut & Seal washer
K2: Locknut & Seal washer & Earth lug
K3: Locknut & Seal washer & Earth lug & Sheath