

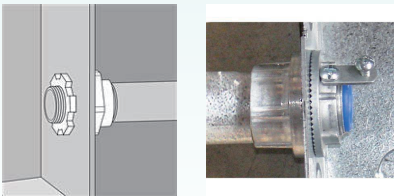
SH Series Conduit Hubs

For Rigid Metal Conduit (RMC), IMC, EMT
For use in Hazardous Locations



Standard Material

- > Threaded termination of electrical conduit through thin wall of sheet metal enclosure
- > Connection indoors or outdoors with rigid metal conduit (RMC),IMC,EMT.
- > Classified and hazardous locations where flammable vapors, gases, ignitable dusts, fibers or flying are present



Application



- > Tapered female thread for rigid metal conduit(RMC),IMC,EMT
- > Designed strong and oversized serrations assure tight bite into wall of sheet metal enclosure
- > Insulated throat protects conductors when pulling the cables
- > Recessed O-ring to assure water-proof and dust-proof connections
- > Optional added safety grounding screw
- > NPT thread (NPT3/8 " – NPT6")
- > Ingress protection: standard IP66
- > Operating Temperature:-15 °C ~+120 °C

Standard Material

- > Zinc Die Cast
- > Aluminium Alloy

Certifications

EN Standard-ATEX

-  II 2 G Ex e II Gb
Zone 1, Zone 2 Group IIA, IIB and IIC
-  II 2 D Ex tb III Db
Zone 21, Zone 22 Group IIIA, IIIB and IIIC

IEC Standard-IECEX

- Ex e II Gb
Zone 1, Zone 2 Group IIA, IIB and IIC
- Ex tb IIIC Db
Zone 21, Zone 22 Group IIIA, IIIB and IIIC

NEC Standard-UL

- Class I, Division 2, Group A B C D
- Class II, Division 1, Group E F G
- Type 4X

Ordering Information

Zinc Die Cast

Cat. #	Hub size
SH-Z01	NPT3/8"
SH-Z02	NPT1/2"
SH-Z03	NPT3/4"
SH-Z04	NPT1"
SH-Z05	NPT1 1/4"
SH-Z06	NPT1 1/2"
SH-Z07	NPT2"
SH-Z08	NPT2 1/2"
SH-Z09	NPT3"
SH-Z10	NPT4"
SH-Z11	NPT5"
SH-Z12	NPT6"



Zinc Die Cast

Cat. #	Hub size
SH-Z01G	NPT3/8"
SH-Z02G	NPT1/2"
SH-Z03G	NPT3/4"
SH-Z04G	NPT1"
SH-Z05G	NPT1 1/4"
SH-Z06G	NPT1 1/2"
SH-Z07G	NPT2"
SH-Z08G	NPT2 1/2"
SH-Z09G	NPT3"
SH-Z10G	NPT4"
SH-Z11G	NPT5"
SH-Z12G	NPT6"



Zinc Die Cast

Cat. #	Hub size
SH-A01	NPT3/8"
SH-A02	NPT1/2"
SH-A03	NPT3/4"
SH-A04	NPT1"
SH-A05	NPT1 1/4"
SH-A06	NPT1 1/2"
SH-A07	NPT2"
SH-A08	NPT2 1/2"
SH-A09	NPT3"
SH-A10	NPT4"
SH-A11	NPT5"
SH-A12	NPT6"



Zinc Die Cast

Cat. #	Hub size
SH-Z01G	NPT3/8"
SH-Z02G	NPT1/2"
SH-Z03G	NPT3/4"
SH-Z04G	NPT1"
SH-Z05G	NPT1 1/4"
SH-Z06G	NPT1 1/2"
SH-Z07G	NPT2"
SH-Z08G	NPT2 1/2"
SH-Z09G	NPT3"
SH-Z10G	NPT4"
SH-Z11G	NPT5"
SH-Z12G	NPT6"



Catalogue Numbering System

SH-

Z

Material

Z: Zinc Die Cast

A: Aluminium Alloy

01

Thread Size

01: NPT3/8"

02: NPT1/2"

G

Grounding

Blank

G:With Grounding