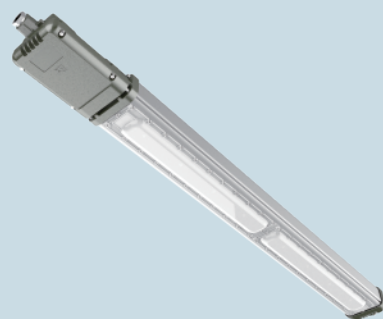


## SLn Series LED Linear Luminaires

Class I, Div.2, Group A, B, C, D Hazardous Locations  
 Class II, Div.1, Group E, F, G Wet Locations, Type 4X, IP 66  
 Class III  
 Zone 2; Zone 21&22



Model	Luminous Flux(LM)	Wattage	Lumen/Wattage	Equivalent Fluorescent luminaire
SLn-40W	5600	40W	140	3x36W
SLn-60W	8400	60W	140	2X58W
SLn-80W	11200	80W	140	—
SLn-120W	16800	120W	140	—



### Applications

- For areas with mounting heights of 10–33ft (3–10m)
- Oil and gas refineries, drilling rigs, petrochemical facilities, land-based and offshore rigs, mining, areas include derrick, mast, SCR house, top drive, operator's house, power and pump stations, and where flammable vapors, gases, ignitable dusts, fibers or flying are present
- Locations requiring continuous and consistent light levels in extreme ambient temperatures
- Where extremely corrosive, wet, dusty, hot and/or cold conditions exist; Type 4X, marine, wet locations and hose-down environments
- Classified and hazardous locations

### Features

- The enclosure is made of high strength die cast aluminum with anti-corrosion powder coat .  
 Unique seal structure and gasketed housing ensures the great functions of water proof and dust proof in the harshest and corrosive environment.
- Built-in LED driver , short circuit protection.
- The power factor is more than 0.98.Wide range of input voltage.
- Low cost for maintenance, built-in LED driver for LED lamp tube.
- Back-up emergency battery for emergency lighting when necessary. Rugged, long life, maintenance-free, Ni-MH battery,
- last for emergency operation time at 10W or 20W LED for 120 minutes or 180 minutes.
- Lightweight, compact size and mounting feet ease installation and allow placement in confined area.

## Compliances

### IEC Standard

IEC60079-0, IEC60079-15, IEC60079-31

Ex nR IIC T6/T5 Gb

Ex tb IIIC T80°C/T95°C Db IP66

Zone 2, Zone21, Zone 22

IP66

### EU Standard

EN60079-0, EN60079-15, EN60079-31



II 3 G Ex nR IIC T6/T5 Gb



II 2 D Ex tb IIIC T80°C/T95°C Db IP66

Zone 2, Zone21, Zone 22

IP66

### NEC & CEC Standard

Class I, Div.2, Group A, B, C, D

Class II, Div.2, Group E, F, G

Class III

Wet Locations, Type 4X, IP66

### UL Standard warm white (3000K)

UL844, UL1598, UL1598A

### CSA Standard

CSA C22.2 No.137

## Standard Materials

- Lamp housing and adapter – die cast aluminum with anti-corrosion powder coat
- Lens – heat-resistant and impact-resistant tempered glass
- Gaskets – silicone
- External hardware – carbon steel or stainless steel
- Factory sealed, no external seals required

## LED System

- High intensity discrete power emitters
- Standard: cool white(5000K); Optional:warm white(3000K); nature white(4000K)
- Brand-new LED chips

## LED Driver

Input Voltage	100–277V AC 50/60Hz	
	277–480V AC 50/60Hz	
THD	<20%	
Power Factor	0.98 (220V/full load)	
Protection	Short Circuit/Over Voltage/Over Heat	
	Surge Protection	Line to line 4KV
		Line to earth 10KV
IP	IP66	

## Catalogue Numbering System

**SLn-**

**20**



Lamp

40–40W

60–60W

80–80W

120–120W

**C**



Mounting Type

C–Ceiling Bracket

S–Stanchion

**N**



Cable Entry

N–NPT3/4"

M–M25x1.5

**C**



Color Temperature

C–Cool(5000K)

N–Nature(4000K)

W–Warm(3000K)

**V1**



Voltage

V1:AC100–277V

V2:AC277–480V

**V1**



Emergency

EM1:120min

EM2:180min

## Technical Datasheet

Classification	Class I,Div.2,Group A,B,C,D Class II,Div.1,Group E,F,G Class III Zone2;Zone 21&22			
Standards	IEC60079-0, IEC60079-15, IEC60079-31 EN60079-0, EN60079-15, EN60079-31 UL844, UL 1598, UL 1598A CSA C22.2 No.137			
Ex-mark	II 3 G Ex nR IIC T6/T5 Gb II 2 D Ex tb IIIC T80°C/T95°C Db IP66			
Rated Voltage	AC 100-277V 50/60Hz AC 277-480V 50/60Hz			
Rated Wattage(W)	40W	60W	80W	120W
Luminous Flux(LM)	5600	8400	11200	16800
Emergency Duration	120min or 180min			
Battery Specification	Ni-MH battery			
Color Temperature	3000K-5000K			
IP Grade	Wet Locations, Type 4X, IP66			
Ambient Temperature	-40° C ~ +55° C / -40° F ~ +131° F			
Cable Entry	M25*1.5 or NPT3/4" (adaptor for M20x1.5,NPT1" ,NPT1 1/2" )			
Terminals	Terminals blocks ≤2.5mm <sup>2</sup> , cable diameter 10-14mm			
Installation	Ceiling Bracket /Wall Bracket			

## Mounting Options & Dimensions (mm/inch)

